



## Model : HS209 Single Phase AC Reversible PM Synchronous Gear Motor

1、Style : 12 poles AC PM Synchronous gear motor

2、Size & Structure : as below

3、Electrical Specifications :

Rated Voltage : 24VAC、48VAC、110VAC、240VAC

Frequency : 50/60HZ

Rated Voltage : 85~110% Rated Voltage

Power Consumption :  $5 \pm 0.5$  Watt

Current Consumption :  $30 \pm 5$  Ma

Withstand Voltage : 1500 VAC / 1 Min.

Insulation Resistance : Over 100 Mohm at 500 VDC

4、Mechanical Specifications :

Motor Speed : 500, 600 rpm at 50/60HZ

Direction of Rotation : Reversible CW and CCW

Starting Torque : 40 kg-cm at 1rpm , 35 kg-cm at 2rpm

Constant Torque : Approx. 30 kg-cm at 1 rpm , approx. 20 kg-cm at 2 rpm

Motor speed with gearbox : 1、2.5、5、10、20、30、60 rpm at 50/60Hz

5、General Specification :

Operating Temp. Range : -10 ~ +60 °C

Insulation Class : A105 °C

Temperature Rise : 65 °C Max.

Expectant Lifespan : Approx.10,000 hours or one year

Net Weight : 280 grams

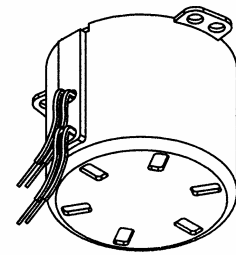
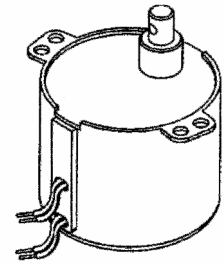
Lead Wire : Flexible Leads, UL1015/1007

Noise : 40 db Max.

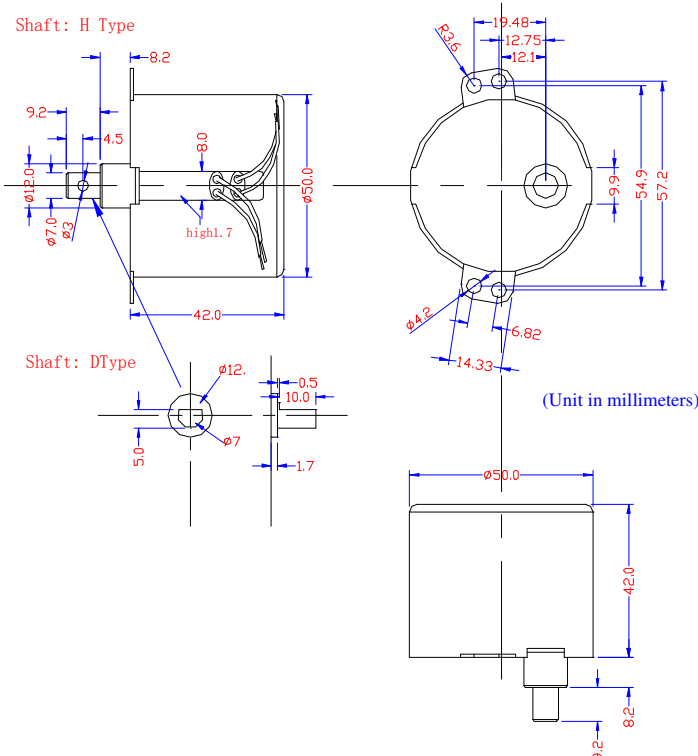
Appearance Stature :  $\phi$  50x42 m/m

Shaft End Play : Max. 0.8mm

6、Package : 50 pcs/ CTN ; 13.5 kgs/N.W. , 14 kgs/G.W.



(A). Dimensional Draws :



(B). Connection Wire Diagram :

\*The rotation direction of the AC synchronous motors can be determined by simply connecting a capacitor and a switch across the two windings as shown.

